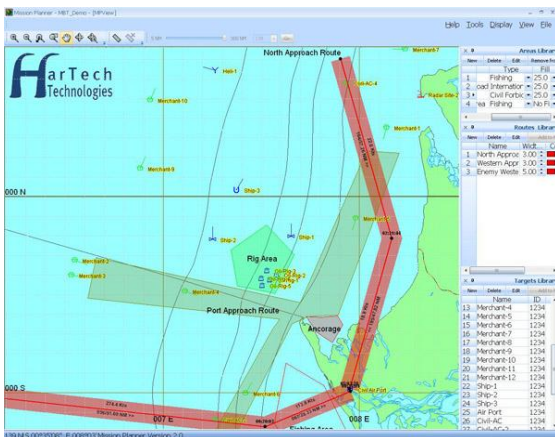




HarTech Technologies is an innovative private company specialising in the development of advanced command and control systems and simulation infrastructure solutions.

One of HarTech's flagship products is the Smart Scenario Generator (SSG) which is currently deployed with major systems integrators in both air and land domains throughout the world. It is an advanced framework for the creation, development and animation of synthetic environments.



Whilst designed to 'stand alone', the SSG also allows the user to tailor the environment to specific needs, with capabilities to display and manipulate multilayered, multi resolution mapping, providing individually appropriate contexts as required. These features, along with the implementation of terrain analysis and sensor behaviour, can combine to provide mapping displays which genuinely represent the real world environment.

Thus the ready-to-use SSG application is well poised to be complemented by the right software development kit (SDK) to enable end users to adapt and extend the capabilities of the system to maximum effect.

While HarTech's key skills lie in the generation of high fidelity large scale synthetic environments, it is Envitia's particular expertise to produce a level of performance, sophistication and detail in the accompanying software to provide an appropriate environmental picture to any given circumstances – so essential for eventual success in the field.

After evaluating a number of geospatial toolkits, HarTech chose Envitia's Maplink Pro suite to provide the high performance mapping, terrain management and entity visualisation for their SSG product.

Together MapLink Pro mapping components provide a truly flexible toolkit for visualising a geospatial context of appropriate sophistication for the simulation environment. MapLink Studio provides data ingest capabilities for a wide range of general purpose and military formats (including VPF, ENC, DNC, CDRG, ASRP, NITF\NSIF, GeoTIFF, Jpeg2000, DAFIF and Jeppesen ARINC424) and can produce multi-resolution maps in 1000's of different projections.

The MapLink Pro Dynamic Data Objects enable support for very high performance visualisation of the simulated entities. A key factor in HarTech's decision to choose Envitia

was performance, with MapLink Pro capable of visualising in excess of 20,000 entity updates per second.

The MapLink Pro Terrain SDK provides the import of terrain and bathymetry information into a terrain database, enabling on-the-fly calculations for line of sight, inter-visibility, sensor view shed and terrain contours to make all important determinations of how communications, radar and other sensor behaviours are being affected by the environment.

HarTech have concluded that the Envitia MapLink Pro product suite can provide all the necessary functionality to construct the full environmental picture and entity visualisation required for

credible simulation, and are now finding it useful in their other product areas of Situational Awareness and Command and Control.

Functionality, however, is only one part of the story. Equally important to HarTech was the ease of integration and use of MapLink Pro with the SSG application, as well as the support and flexibility of the Envitia team itself.

Offer Har, CEO of HarTech maintains this opinion:

*“From the outset Envitia assisted at every stage of the evaluation and development process. This coupled with the ease of use and flexibility of their product made Envitia and MapLink Pro the ideal choice for us.”*

